

Cleanup Begins

Public Meeting

April 19, 2010
6:30 p.m.

Mary McLeod Bethune Life Center
140 Dr. Martin Luther King Jr. Drive
Jersey City, N.J.

Chromium Cleanup
Partnership

N.J. DEPARTMENT OF ENVIRONMENTAL PROTECTION
CITY OF JERSEY CITY
PPG INDUSTRIES
COURT-APPOINTED SITE ADMINISTRATOR

Meeting Overview

- n **Welcome / Introduction**
- n **Updates/Housekeeping**
- n **Citizens Advisory Board**
- n **Cleanup Plans Presentation**
 - n Proposed Cleanup Plans
 - n Initial Cleanup Process
- n **Q&A Session**

Updates/Housekeeping

- n **Site Administrator's absence**
- n **Residential Inspection Program Update (Brian McPeak)**
- n **Report on site inspection and sidewalk (Prabal Amin)**
- n **Next Meeting on Health Study Recommendation May 20**
- n **Blood Screening sign-up sheets**
- n **Settlement Overview in handout**

Mayor's Citizen Advisory Board

n Markis Abraham, Chairman

Summary of Work Beginning This Summer ...What to Expect

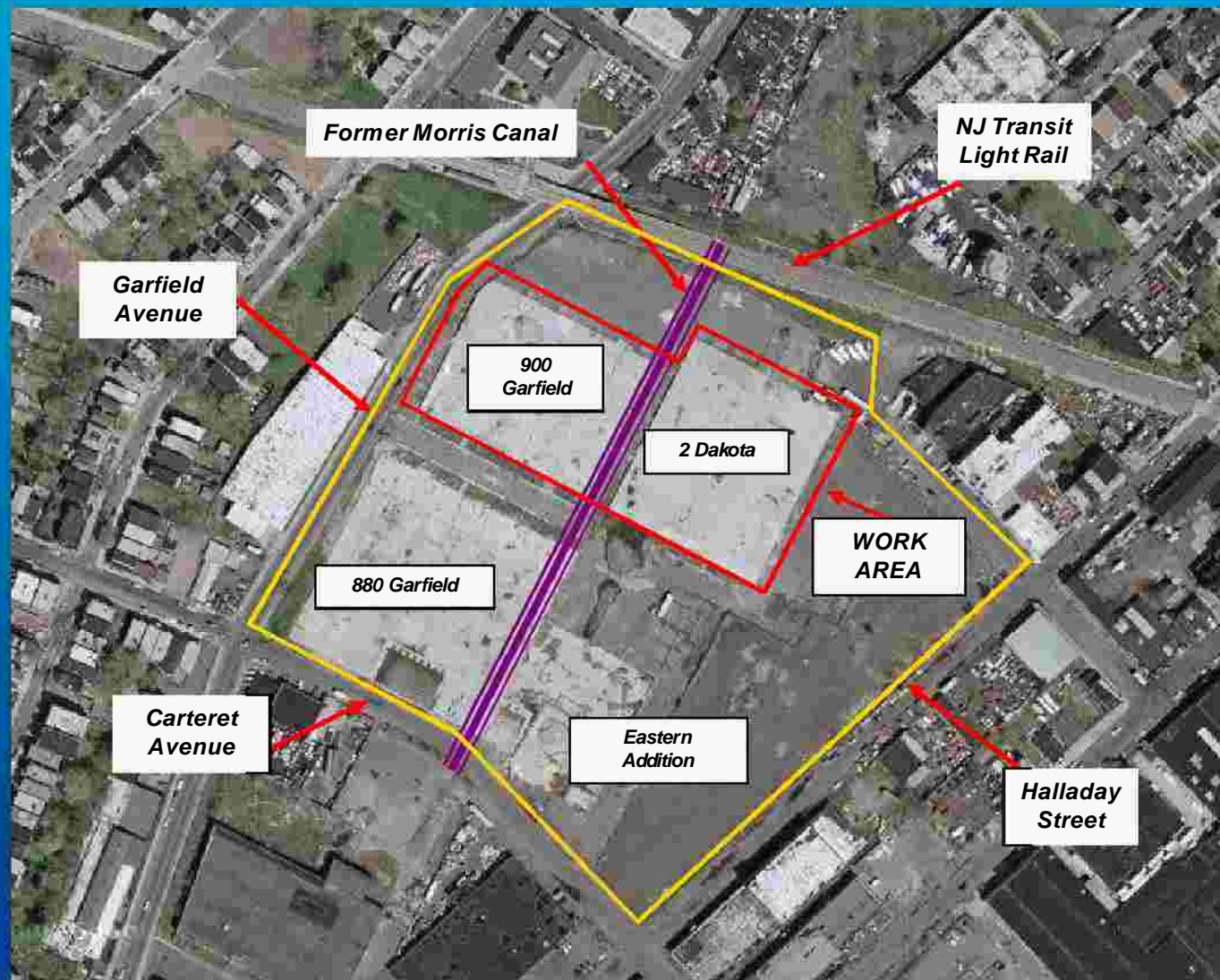
May-June 2010 (Site Preparation)

- n On-site paving of truck routes
- n Utility pole installation / power distribution on-site
- n Additional construction trailers on-site
- n Air Monitoring Station installation

June 2010 – February 2011 (Excavation and Removal)

- n Heavy construction equipment on-site
- n High level of activity

Garfield Avenue Site



Cleanup Areas for This Summer Garfield Avenue



Excavation and Slab Removal Objectives

Significant first step in cleanup of Garfield Avenue site

Remove a large volume of material from the site:

- n Surface Concrete Slabs (4 acres, 10,000 tons) – remnants of former warehouse foundations
- n Subsurface structures (debris, inactive utilities, foundations)
- n Highly contaminated chrome waste (36,000 tons) – so-called “Green Gray Mud”
- n All material will go to a secure federally licensed disposal facility off-site
- n Work area will be filled with clean soil at completion of this phase

Site Operations - Workweek Activity

- n Proposed Working hours Monday through Friday: 7 a.m. to 7 p.m.
- n No work on Sunday planned
- n Some work on Saturday is possible

Site Operations - Control Plans

- n Air Monitoring Plan
- n Dust Control Plan
- n Health & Safety Plan
- n Traffic Safety and Control Plan

Site Operations - Air Monitoring

Key elements of protective Air Monitoring Plan

- n A combination of permanent and mobile Air Monitoring Stations will be continuously checking to make sure that safe conditions are maintained during all cleanup activities
- n These stations will monitor conditions in various zones and will protect surrounding residents by requiring that dust suppression measures be increased if conditions warrant and work be halted if conditions require

Site Operations - Air Monitoring

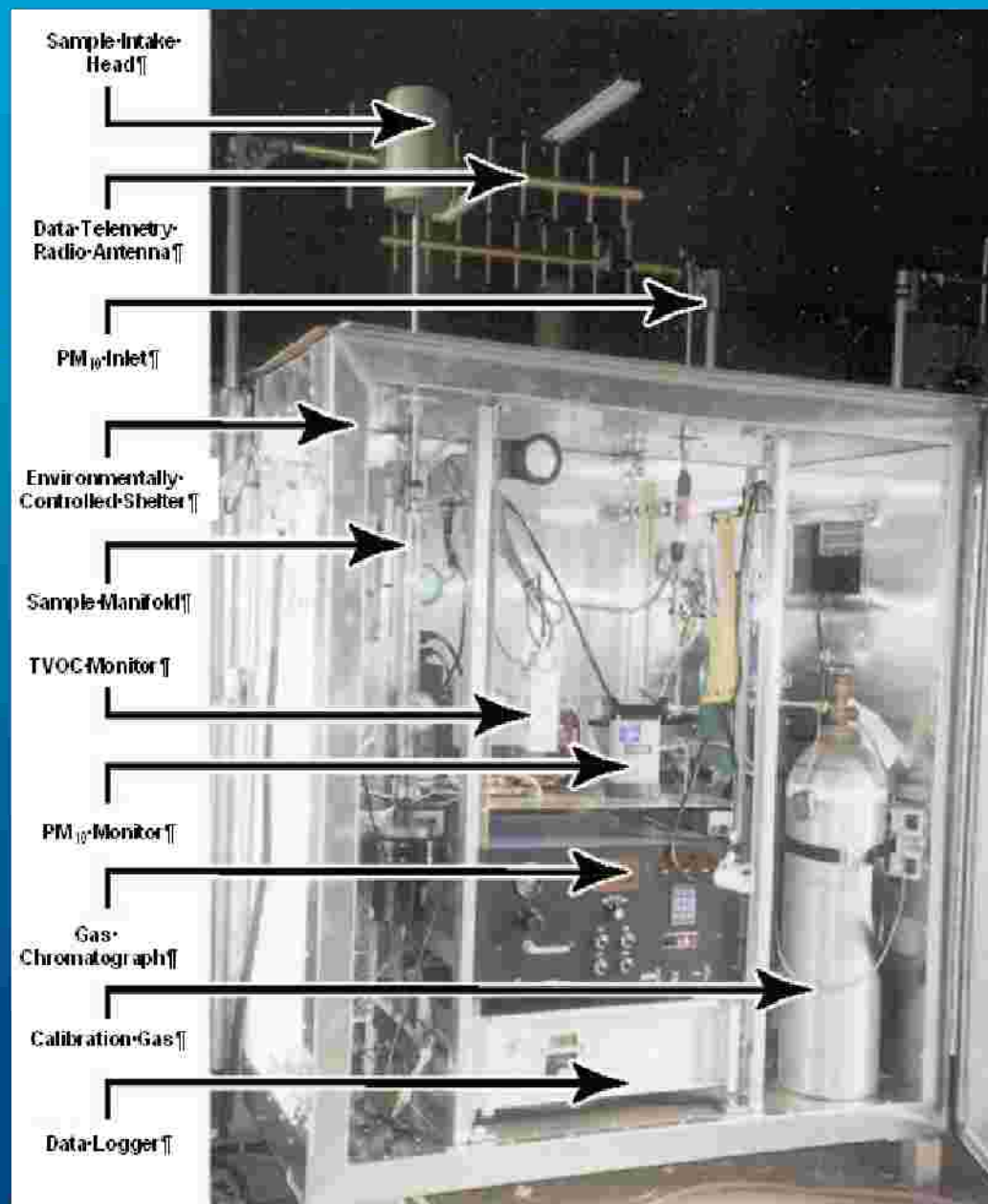
Key elements of protective Air Monitoring Plan

- n By imposing the site perimeter action levels well inside the site – at the work zone – nearby residential properties are protected
 - n Hand-held air monitors at work area
- n Fulltime Air Monitoring technicians
- n Air monitoring results to be posted weekly to Chrome Cleanup Partnership Web site

Proposed Locations for Air Monitoring Stations



Fixed Fenceline Air Monitoring Station



Mobile Air Monitoring Station



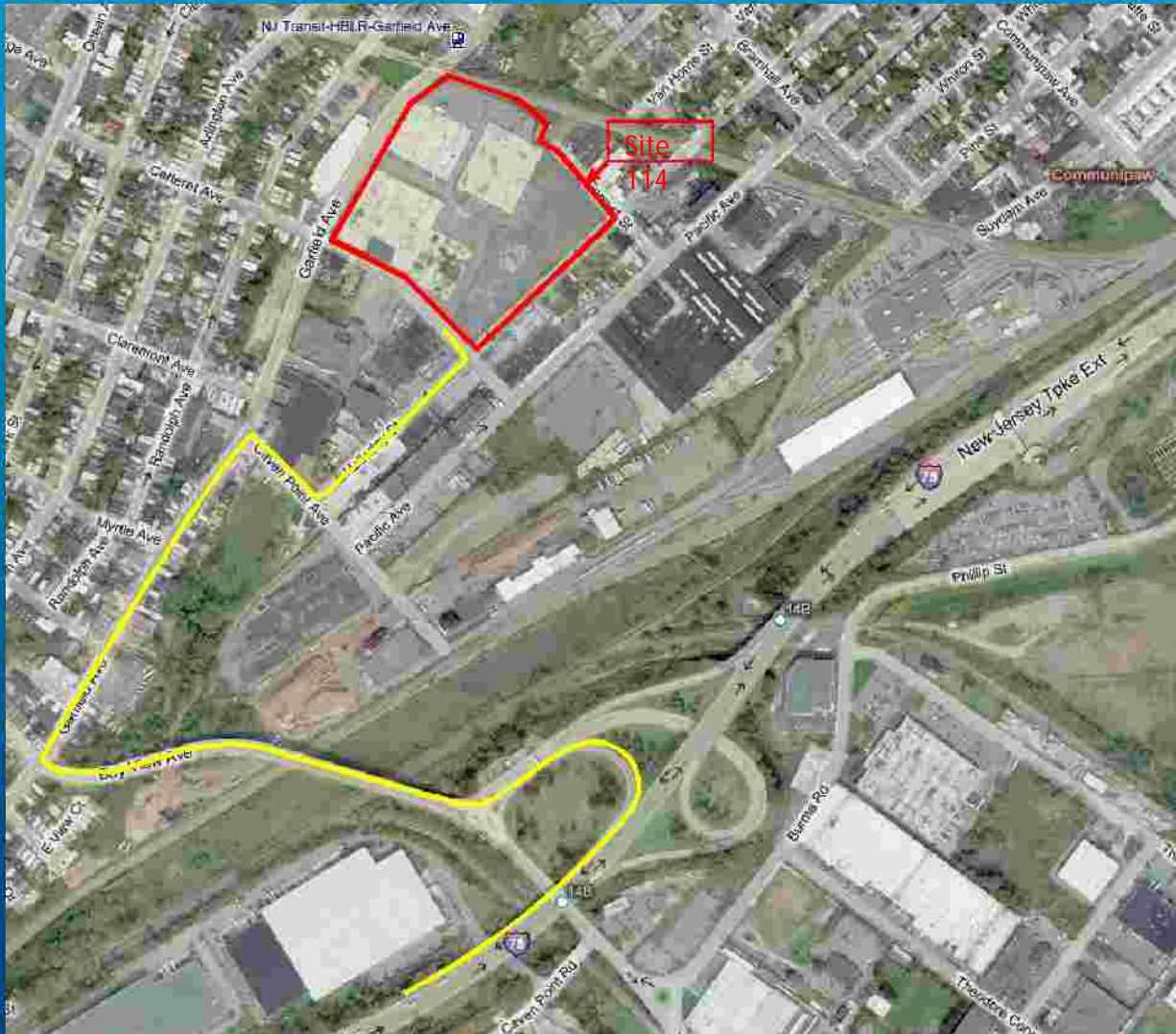
Chromium Cleanup
Partnership

Site Operations - Dust Control

Key elements of Dust Control Plan to prevent contamination to community and workers

- n Comprehensive dust suppression methods
- n Water misting of work areas
- n Truck traffic only on paved areas
- n Spilled soil, if any, to be cleaned up immediately
- n Stockpiles covered
- n On-site dust control technicians

Proposed Truck Route



Site Operations - Traffic Control

Key elements of Traffic Safety & Control Plan:

- n Minimize traffic issues
- n Waste material will be safely removed from the site using trucks whose beds are lined, covered and contained
- n All trucks will be washed twice and inspected prior to leaving the site to prevent soil from being tracked off-site; washwater collected, containerized and disposed off-site

Site Operations - Health & Safety

Key elements of Health & Safety Plan:

- n Community and worker health and safety designated as top priority
- n Safe work practices & procedures – workers and public protection
- n Work practices & procedures meet OSHA rules
- n Storage, handling, and use of materials and equipment will be strictly controlled
- n Site will remain fully fenced with 24-hour security

Independent Technical Consultant

- n Selected and hired by the independent, court-appointed Site Administrator.
- n Weston Solutions has 50 years of experience in site cleanups, including many in New Jersey. Project manager has 20 years of experience.
- n Serves as an independent technical adviser to NJDEP, providing the agency with technical analyses.
- n Assists the Site Administrator in maintaining the 5-year Master Schedule.

Garfield Avenue Steps to Final Cleanup

- n Complete investigation of extent of contamination
- n Conduct site tests
- n Identify, test, evaluate and compare possible cleanup technologies

Evaluation of Alternatives

Most promising alternatives will be measured against the following considerations:

- n Protection of human health and the environment
- n Ability to meet cleanup requirements and standards
- n Long-term, sustained protection
- n Performance assurance
- n Community and worker protection during cleanup
- n Ability to be ready and operational
- n Community input
- n Cost

Cleanup Selection Process

- n PPG will develop cleanup alternatives for NJDEP consideration, followed by:
 - n Independent Technical Consultant review
 - n Jersey City and Developer review
 - n Community review
- n DEP factors in all considerations when selecting final cleanup measure(s)

Areas of Work Beginning This Summer



Field Testing Objectives

- n Evaluate range of clean-up technologies for Soil and Groundwater
- n Assess permanence and technical feasibility using testing data
- n Outcome - clean-up alternatives summarized in Final Report
- n NJDEP selects final clean-up measure(s) early 2012
- n After selection, full-scale cleanup to begin spring 2012

Settlement Overview

- n On June 26, 2009, DEP, Jersey City and PPG signed a settlement in Superior Court where they agreed to work together to cleanup PPG's chromium sites.
- n The agreement:
 - § Establishes a 5-year goal to clean up all 20 sites;
 - § Creates new position of an independent, court-appointed Site Administrator;
 - § Creates new position of an independent Technical Consultant;

Settlement Overview

n The agreement also:

- § Establishes residential site inspection and cleanup program for chrome waste;
- § Directs the Site Administrator to review existing health studies, consult with experts and recommend further actions, if necessary;
- § Requires PPG to make reasonable efforts to hire 20% of its cleanup workforce from Jersey City and to establish a training program for City residents; and
- § Requires parties communicate activities with affected community.

How to Reach Us

- Phone: 201-777-2099
- E-mail: Info@chromecleanup.com
- Mail: Chromium Cleanup Partnership
P.O. Box 15981
Jersey City, N.J. 07305
- Visit: PPG's Garfield Avenue Renewal Company
334 Martin Luther King Drive
Tuesdays and Thursdays 10 a.m. - 2 p.m.